

RECOMMENDED PLAN

SILVERTHORNE DRAINAGE MASTER PLAN

Legend

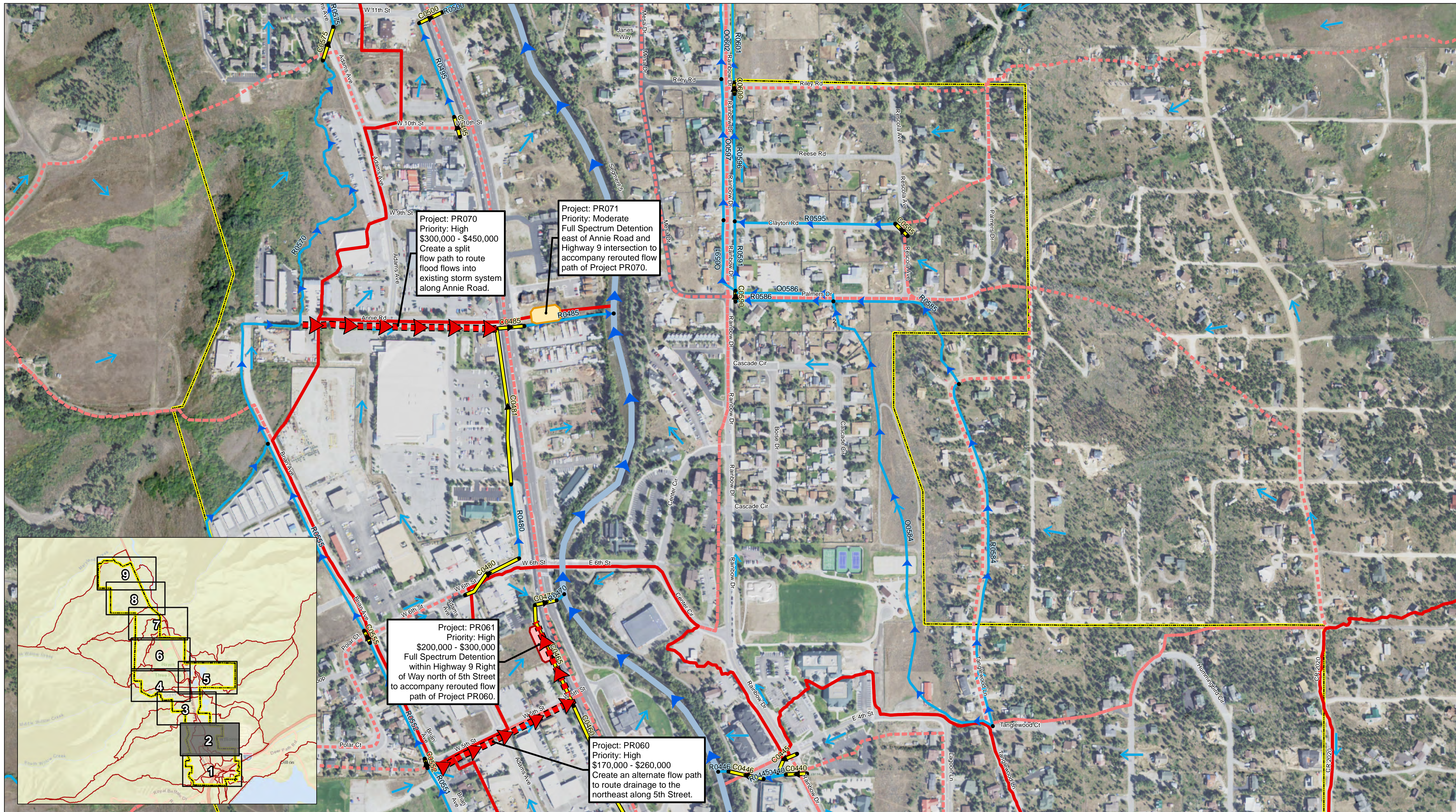
- Silverthorne Town Boundary
- Blue River
- Open Channels
- Storm Drains
- Flow Direction
- Basins
- Subbasins

Priority of Recommended Projects

- Moderate
- Low
- High
- Moderate
- High

1 inch = 200 feet
0 100 200 Feet

MAP E.1

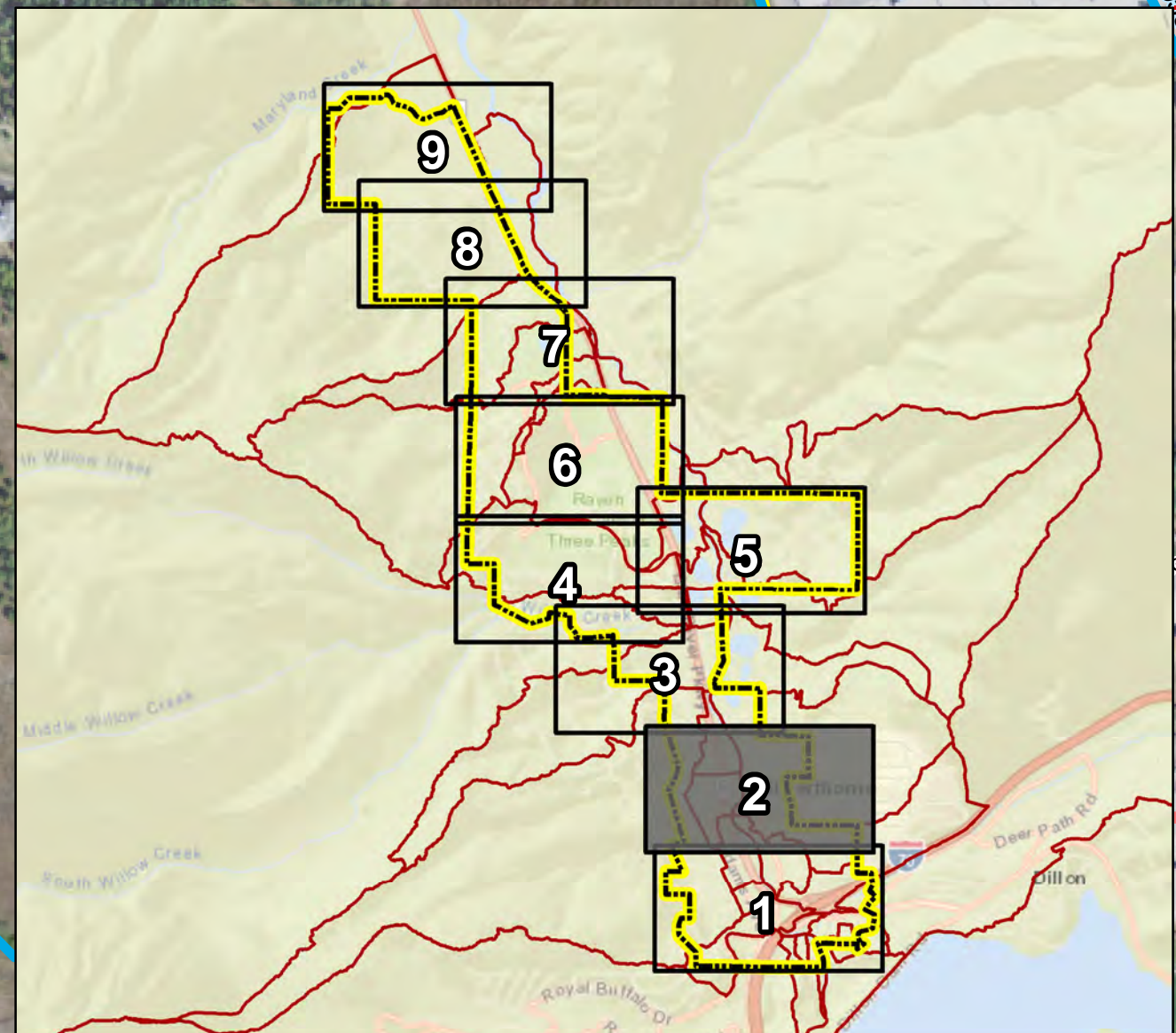


Project: PR070
 Priority: High
 \$300,000 - \$450,000
 Create a split flow path to route flood flows into existing storm system along Annie Road.

Project: PR071
 Priority: Moderate
 Full Spectrum Detention east of Annie Road and Highway 9 intersection to accompany rerouted flow path of Project PR070.









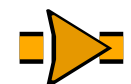



Project: PR061
 Priority: High
 \$200,000 - \$300,000
 Full Spectrum Detention within Highway 9 Right of Way north of 5th Street to accompany rerouted flow path of Project PR060.

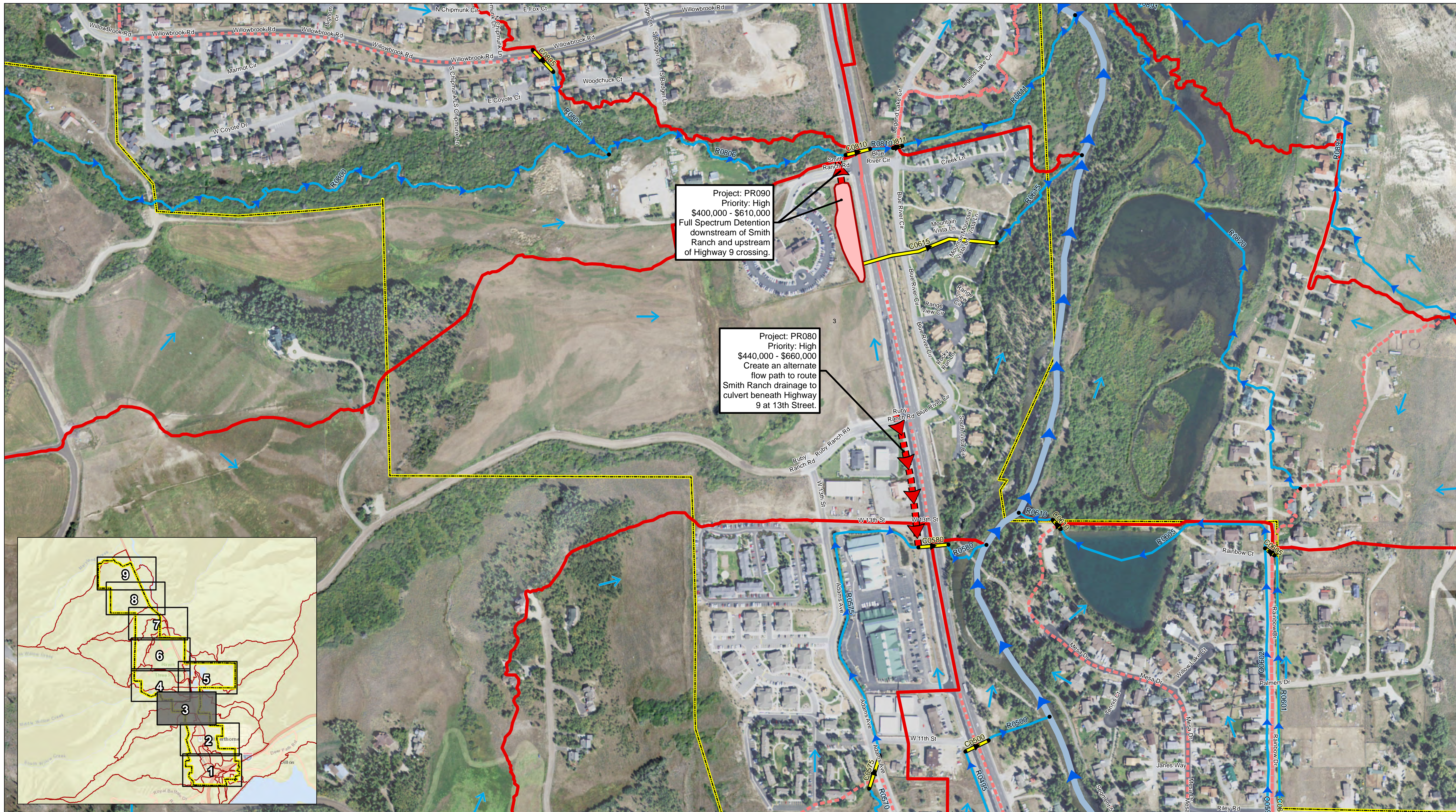
Project: PR060
 Priority: High
 \$170,000 - \$260,000
 Create an alternate flow path to route drainage to the northeast along 5th Street.



RECOMMENDED PLAN

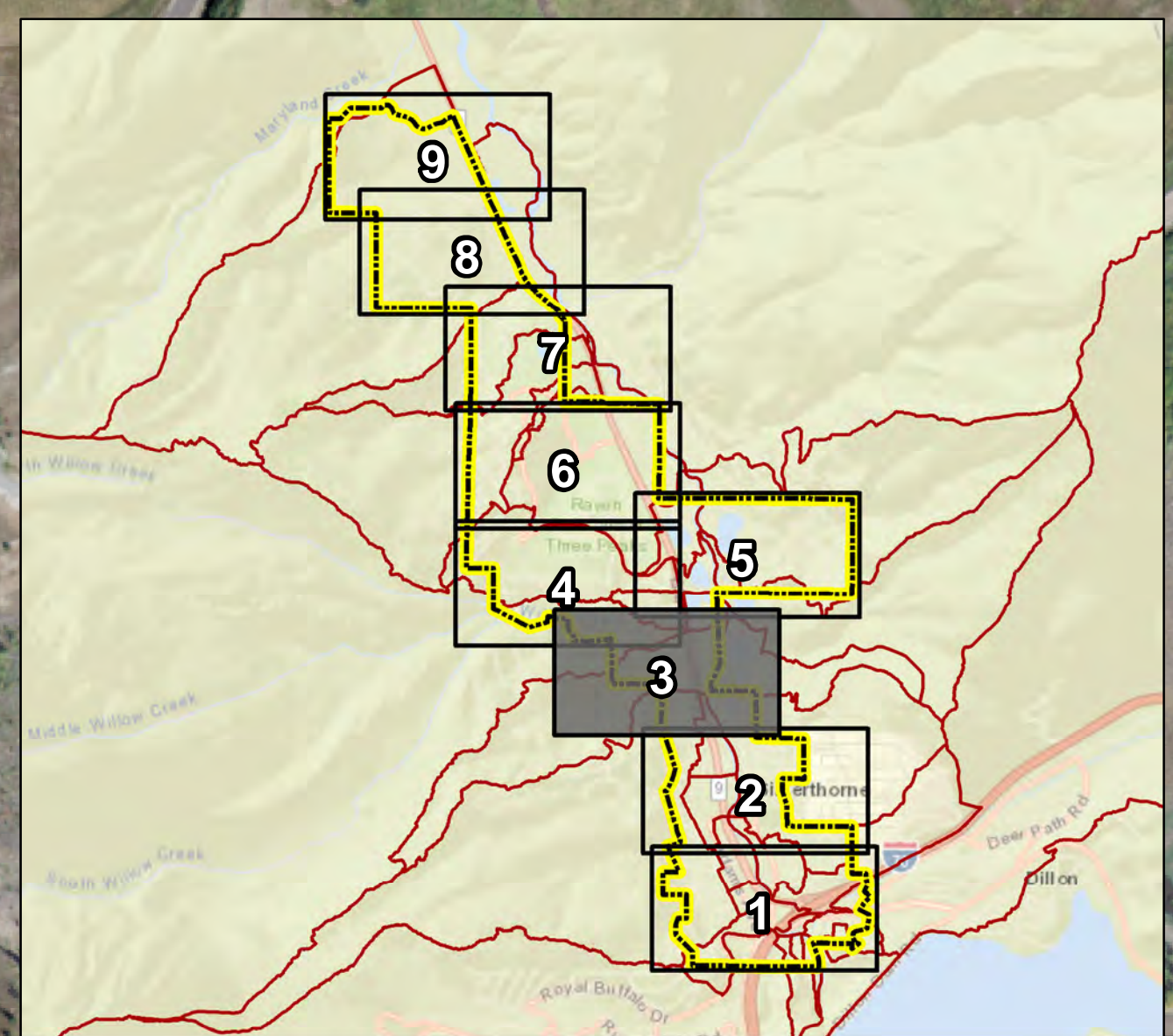
SILVERTHORNE DRAINAGE MASTER PLAN

Legend		Priority of Recommended Projects		 1 inch = 200 feet 0 100 200 Feet	MAP E.2
 Silverthorne Town Boundary  Blue River  Open Channels	 Storm Drains  Flow Direction  Basins  Subbasins	 Moderate  Low	 High  Moderate		



Project: PR090
 Priority: High
 \$400,000 - \$610,000
 Full Spectrum Detention
 downstream of Smith
 Ranch and upstream
 of Highway 9 crossing.

Project: PR080
 Priority: High
 \$440,000 - \$660,000
 Create an alternate
 flow path to route
 Smith Ranch drainage to
 culvert beneath Highway
 9 at 13th Street.



RECOMMENDED PLAN

SILVERTHORNE DRAINAGE MASTER PLAN

Legend

- Silverthorne Town Boundary
- Blue River
- Open Channels
- Storm Drains
- Flow Direction
- Basins
- Subbasins
- Priority of Recommended Projects
 - Moderate
 - Low
 - High
- High
- Moderate

Priority of Recommended Projects

- Moderate
- Low
- High

1 inch = 200 feet
 0 100 200 Feet

MAP E.3



Project: PR101
 Priority: Moderate
 Full Spectrum Detention
 at southeast corner
 of Highway 9 and
 Bald Eagle Road.

Project: PR100
 Priority: Low
 Increase culvert
 capacity beneath
 Highway 9 south of
 Golden Eagle Road.

Project: PR090
 Priority: High
 \$400,000 - \$610,000
 Full Spectrum Detention
 downstream of Smith
 Ranch and upstream
 of Highway 9 crossing.



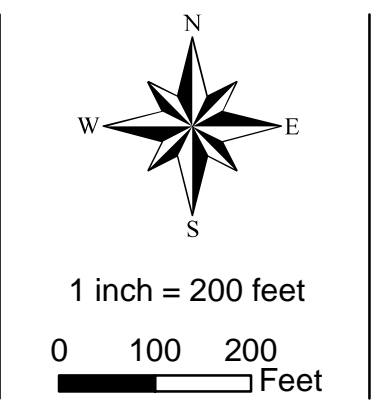
RECOMMENDED PLAN

SILVERTHORNE DRAINAGE MASTER PLAN

Legend

- Silverthorne Town Boundary
- Flow Direction
- Blue River
- Open Channels
- Storm Drains
- Basins
- Subbasins
- High
- Moderate
- Low
- High
- Moderate

Priority of Recommended Projects

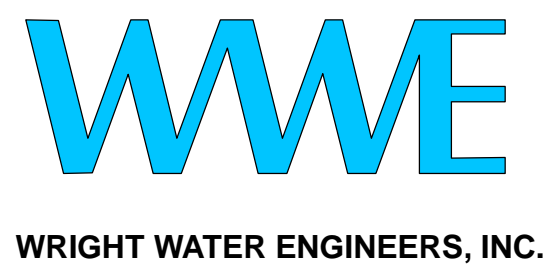
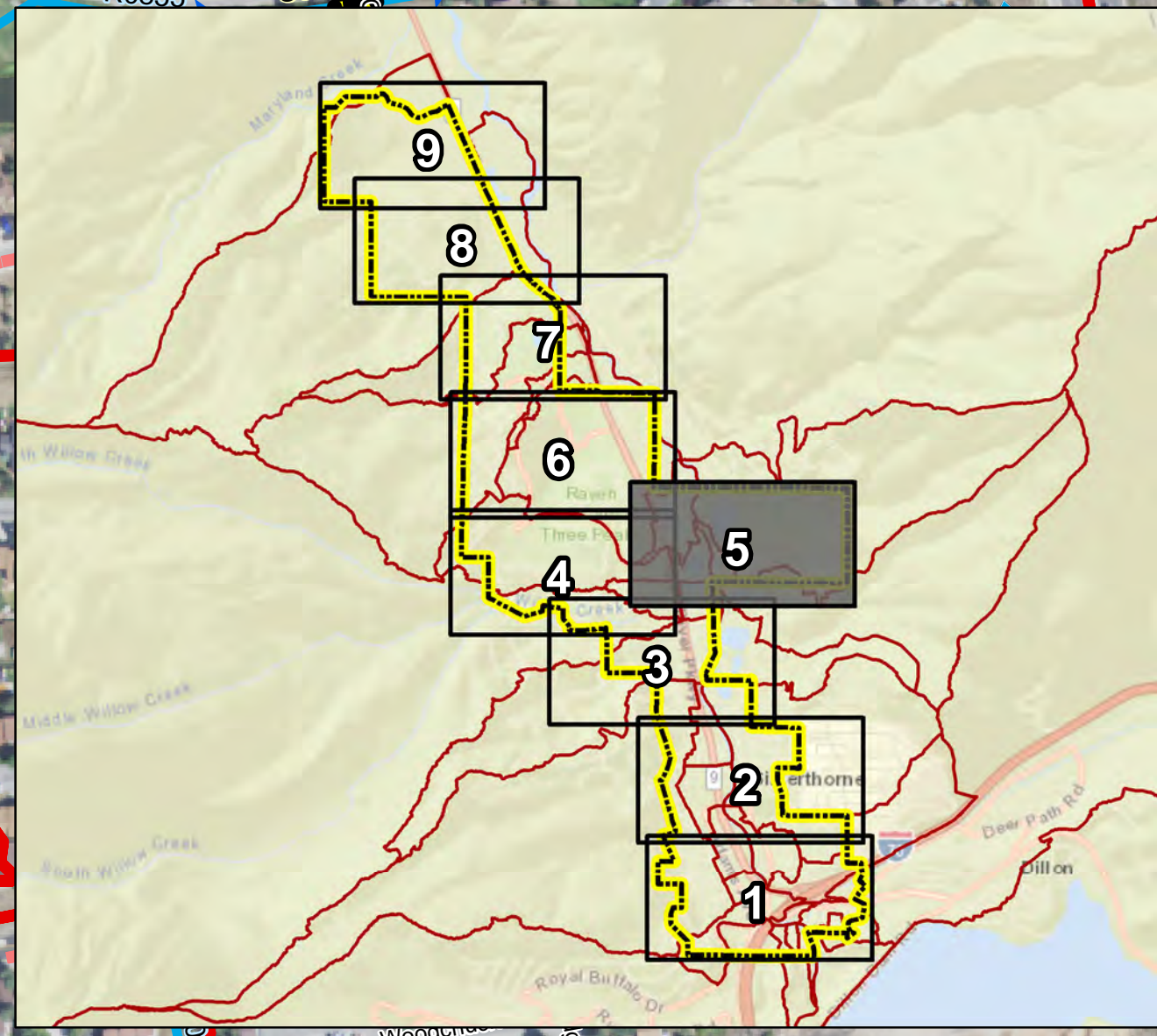


MAP
E.4



Project: PR101
Priority: Moderate
Full Spectrum Detention
at southeast corner
of Highway 9 and
Bald Eagle Road.

Project: PR100
Priority: Low
Increase culvert
capacity beneath
Highway 9 south of
Golden Eagle Road.



RECOMMENDED PLAN

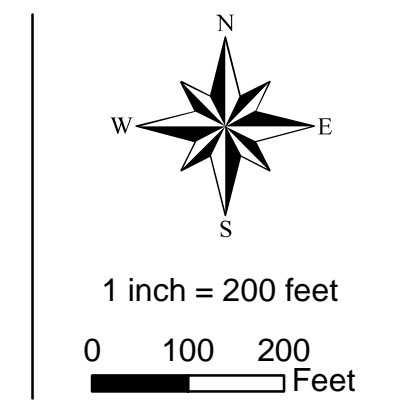
SILVERTHORNE DRAINAGE MASTER PLAN

Legend

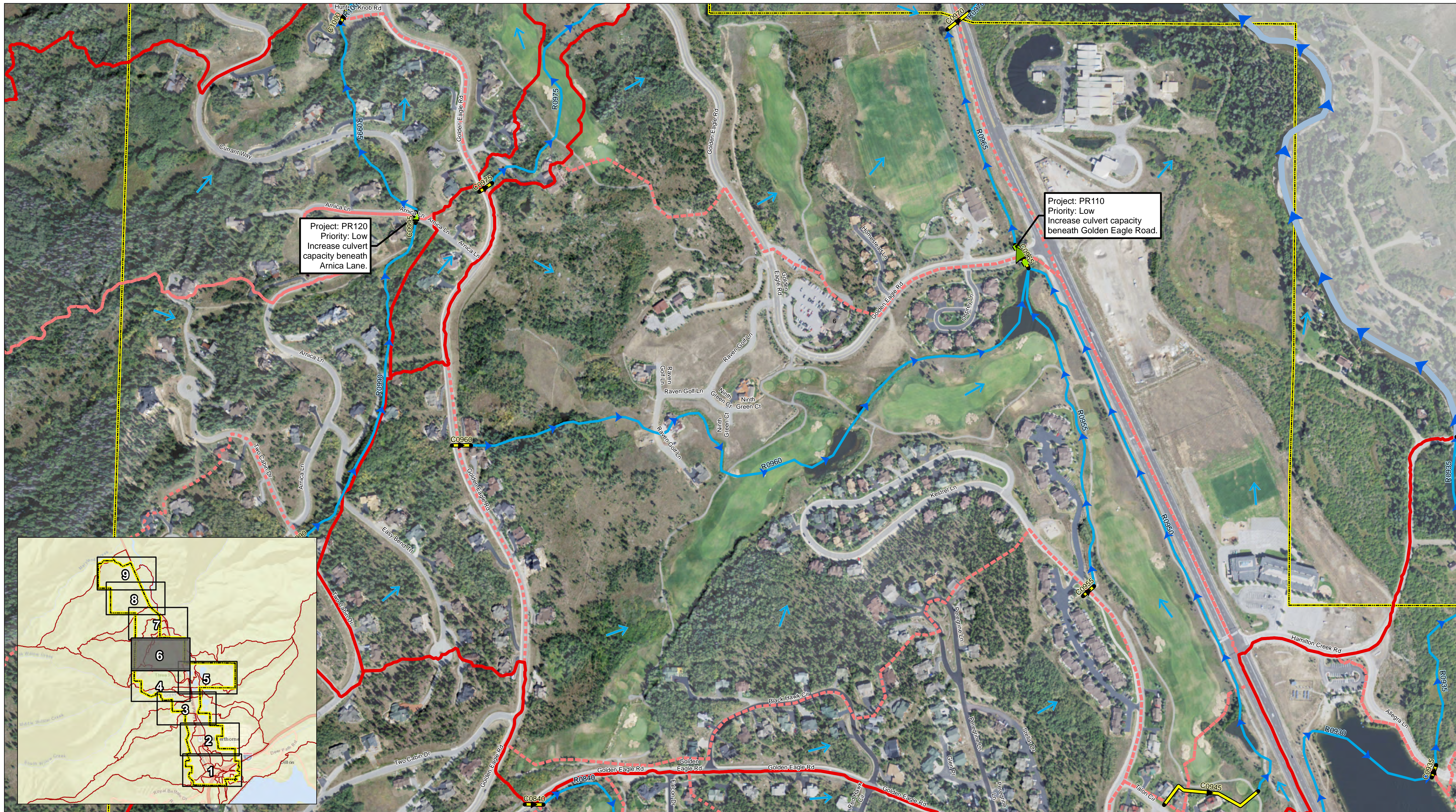
- Silverthorne Town Boundary
- Blue River
- Open Channels
- Storm Drains
- Flow Direction
- Basins
- Subbasins
- High
- Moderate
- Low
- High
- High
- Moderate

Priority of Recommended Projects

- Moderate
- Low
- High
- Moderate



MAP E.5



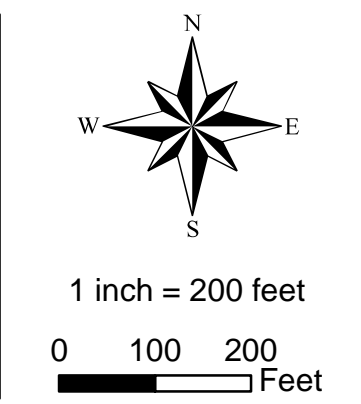
RECOMMENDED PLAN

SILVERTHORNE DRAINAGE MASTER PLAN

Legend

- Silverthorne Town Boundary
- Flow Direction
- Basins
- Subbasins
- Open Channels
- Storm Drains
- Moderate
- Low
- High
- High
- Moderate

Priority of Recommended Projects

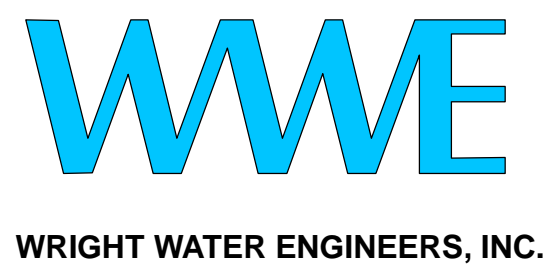
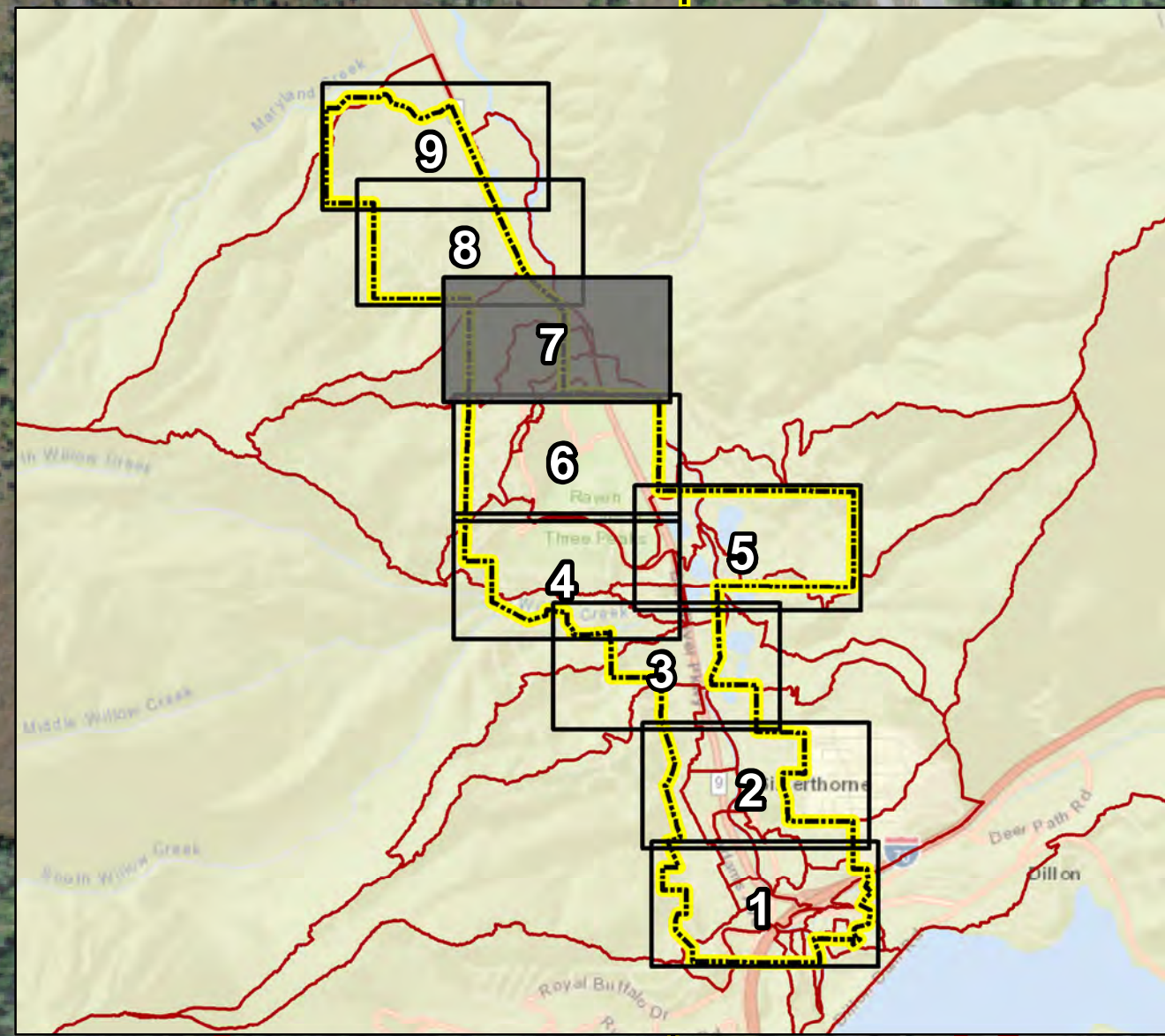


MAP E.6



Project: PR131
 Priority: Moderate
 Full Spectrum Detention
 at southwest corner of
 Highway 9 and Rancher's
 Road to be coordinated
 with Project PR130.

Project: PR130
 Priority: Low
 Increase culvert
 capacity beneath
 Highway 9 south of
 Rancher's Road.



RECOMMENDED PLAN

SILVERTHORNE DRAINAGE MASTER PLAN

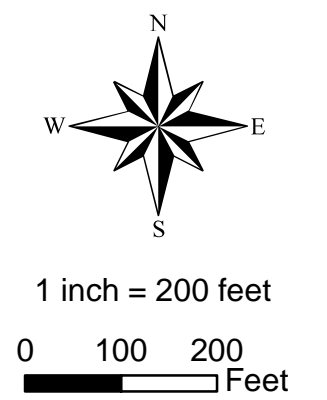
Legend

- Silverthorne Town Boundary
- Blue River
- Open Channels

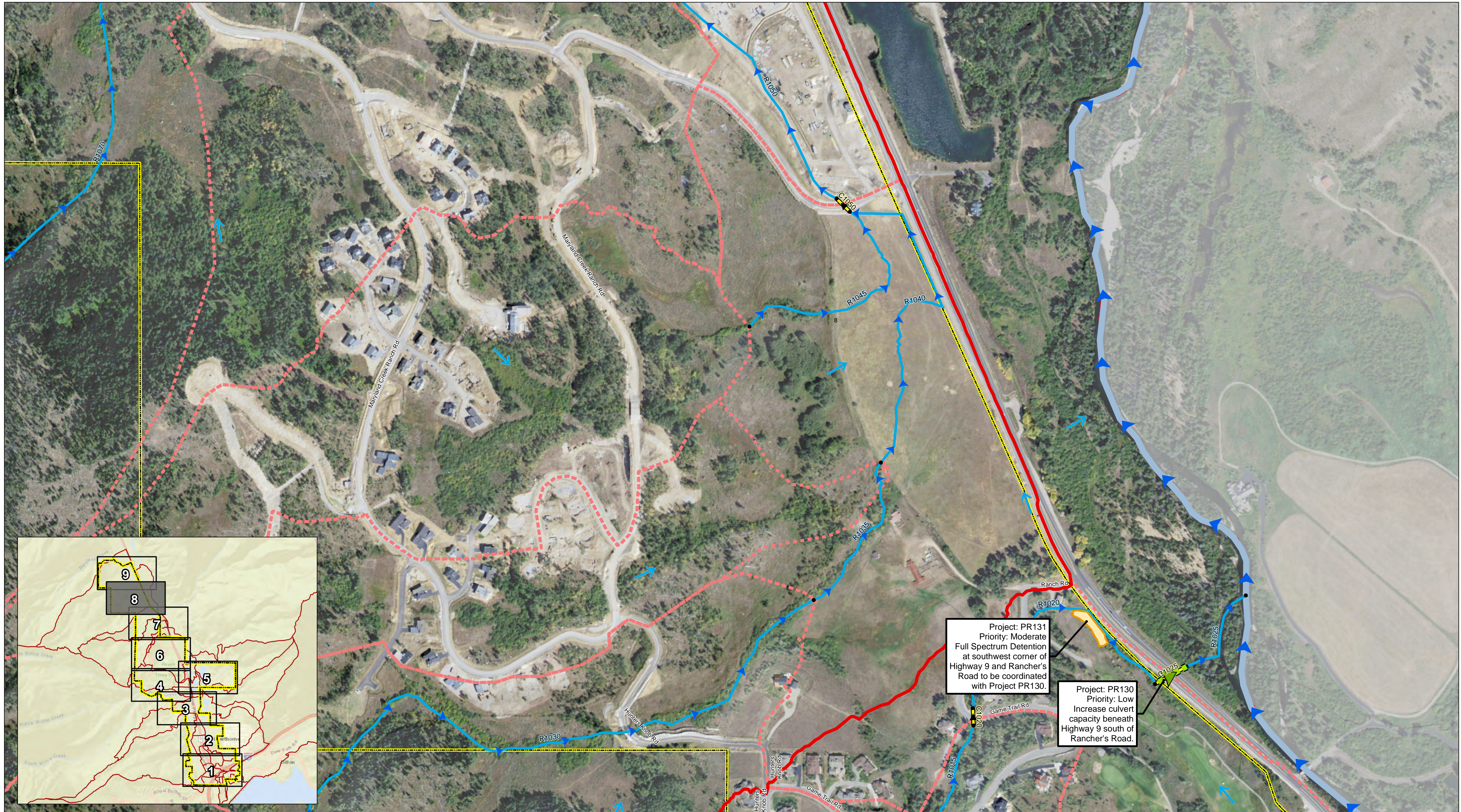
- Storm Drains
- Flow Direction
- Basins
- Subbasins

- #### Priority of Recommended Projects
- High

- Moderate
- Low
- High
- Moderate



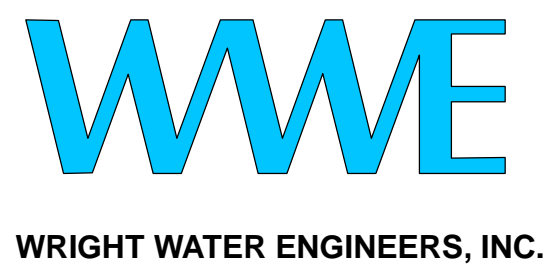
MAP
E.7



RECOMMENDED PLAN

SILVERTHORNE DRAINAGE MASTER PLAN

Legend		Priority of Recommended Projects			MAP E.8
Silverthorne Town Boundary Blue River Open Channels	Storm Drains Flow Direction Basins Subbasins	Moderate Low High	High Moderate		



RECOMMENDED PLAN

SILVERTHORNE DRAINAGE MASTER PLAN

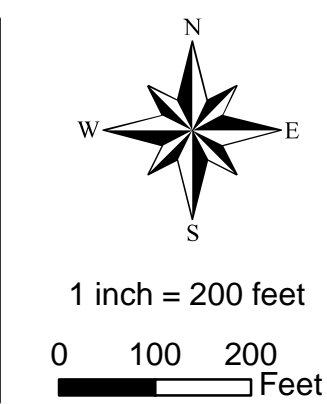
Legend

- Silverthorne Town Boundary
- Blue River
- Open Channels

- Storm Drains
- Flow Direction
- Basins
- Subbasins

- #### Priority of Recommended Projects
- High

- Moderate
- Low
- High
- Moderate



MAP E.9