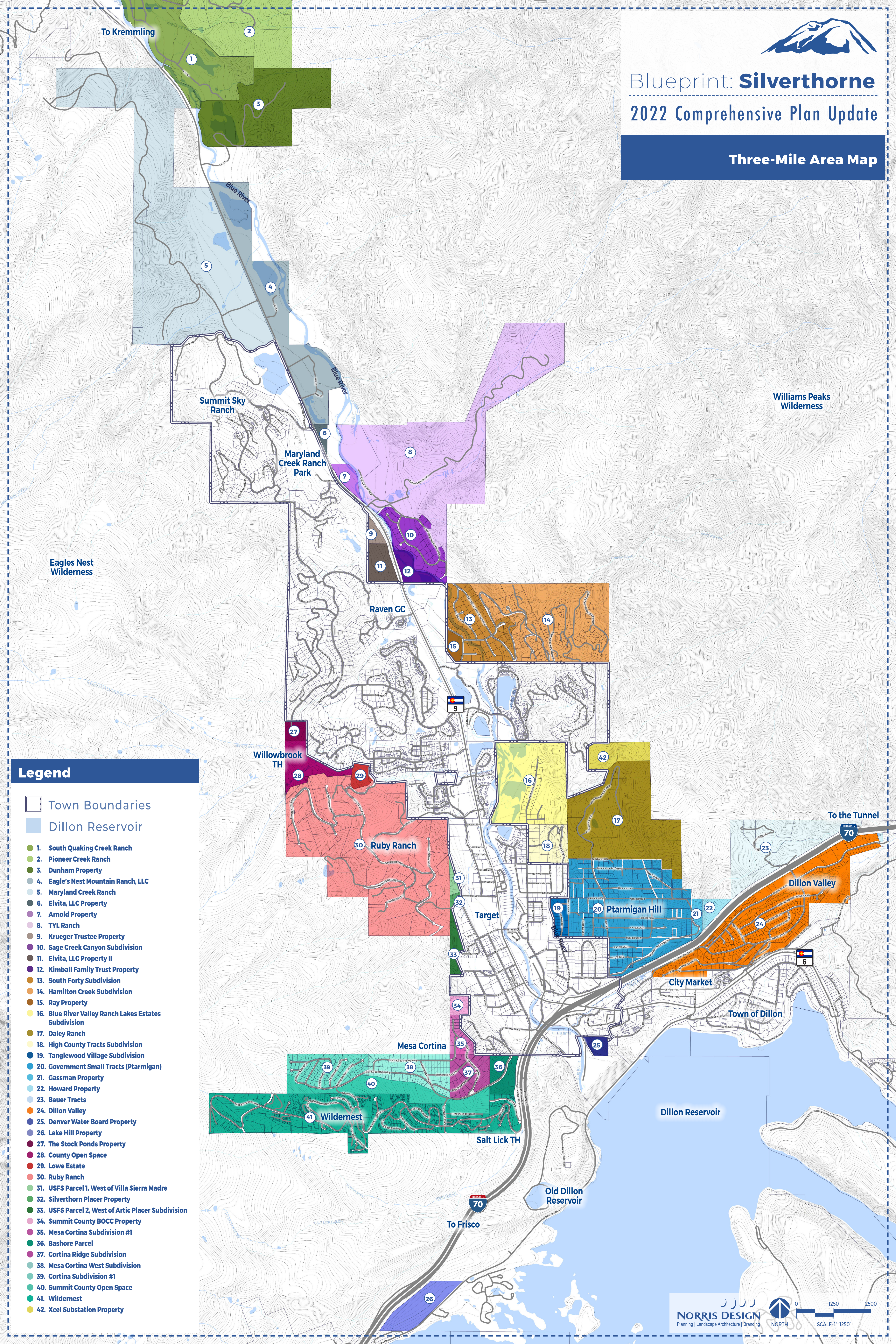




Blueprint: Silverthorne 2022 Comprehensive Plan Update

Three-Mile Area Map



Legend

- Town Boundaries
- Dillon Reservoir
- 1. South Quaking Creek Ranch
- 2. Pioneer Creek Ranch
- 3. Dunham Property
- 4. Eagle's Nest Mountain Ranch, LLC
- 5. Maryland Creek Ranch
- 6. Elvita, LLC Property
- 7. Arnold Property
- 8. TYL Ranch
- 9. Krueger Trustee Property
- 10. Sage Creek Canyon Subdivision
- 11. Elvita, LLC Property II
- 12. Kimball Family Trust Property
- 13. South Forty Subdivision
- 14. Hamilton Creek Subdivision
- 15. Ray Property
- 16. Blue River Valley Ranch Lakes Estates Subdivision
- 17. Daley Ranch
- 18. High County Tracts Subdivision
- 19. Tanglewood Village Subdivision
- 20. Government Small Tracts (Ptarmigan)
- 21. Gassman Property
- 22. Howard Property
- 23. Bauer Tracts
- 24. Dillon Valley
- 25. Denver Water Board Property
- 26. Lake Hill Property
- 27. The Stock Ponds Property
- 28. County Open Space
- 29. Lowe Estate
- 30. Ruby Ranch
- 31. USFS Parcel 1, West of Villa Sierra Madre
- 32. Silverthorn Placer Property
- 33. USFS Parcel 2, West of Artic Placer Subdivision
- 34. Summit County BOCC Property
- 35. Mesa Cortina Subdivision #1
- 36. Bashore Parcel
- 37. Cortina Ridge Subdivision
- 38. Mesa Cortina West Subdivision
- 39. Cortina Subdivision #1
- 40. Summit County Open Space
- 41. Wildercrest
- 42. Xcel Substation Property